

# Lightning Class Season Series

June 1 – September 14, 2021

South Shore Yacht Club

Lightning Fleet 79

Milwaukee, WI

## SAILING INSTRUCTIONS

### 1 RULES

- 1.1 The Series is governed by the rules as defined in *The Racing Rules of Sailing* and the Rules of the International Lightning Class.
- 1.2 ILCA membership is encouraged.
- 1.3 All competitors should read and adhere to the *SSYC Sail Racing Fleets COVID-19 2020 Season Guidelines* and adhere to them as appropriate.

### 2 CHANGES TO SAILING INSTRUCTIONS

Any change to the sailing instructions will be posted before 1700 on the day it will take effect, except that any change to the schedule of races will be posted by 2000 on the day before it will take effect.

### 3 COMMUNICATIONS WITH COMPETITORS

Notices to competitors will be posted on the official notice board located at the SSYC derrick house and online SSYC.org, Fleets, Race Docs.... Lightning Docs...

### 4 SIGNALS MADE ASHORE

- 4.1 Signals made ashore may be verbally and displayed on the SSYC flag mast.
- 4.2 When flag AP is displayed ashore, “1 minute” is replaced with “not less than 30 minutes” in the race signal AP.

### 5 SCHEDULE OF RACES

- 5.1 Dates of racing:  
Two (2) races are scheduled for each of the following Tuesdays:  
June 1, 8, 15, 22, 29      July 6, --, 20, 27  
August 3, 10, 17, 23, 31      Sept 7, 14
- 5.2 The scheduled time of the warning signal for the first race each day is 1830, except that August 17<sup>th</sup> and thereafter it is 1815.

- 5.3 To start a race, at least two (2) boats are required in the starting area.

### 6 RACING AREA

The racing area will be at the south end of the Milwaukee harbor between the Main Gap and the South Gap. See Illustration A below.

### 7 THE COURSES

- 7.1 The diagram below in Illustration B shows the course, including the order in which marks are to be passed, and the side on which each mark is to be left.
- 7.2 No later than the preparatory signal, the race committee will hail the number of legs of the race.
- 7.3 Legs of the course will not be changed after the preparatory signal. This changes RRS 33.

### 8 MARKS

The marks will be, orange, yellow, or red inflatable or ball throw-in buoys.

### 9 THE START

- 9.1 Races will be started using RRS Appendix U, Audible-Signal Racing System.
- 9.2 The starting line is between a staff or halyard displaying an orange flag on the signal vessel at the starboard end and the course side of the port end starting mark.
- 9.3 If any part of a boat's hull is on the course side of the starting line at her starting signal and she is identified, the race committee will attempt to hail her sail number or name. Failure to hail her number, or her to hear such a hail, or the order in which boats are hailed will not be grounds for a redress for request. This changes RRS 62.1(a).

### 10 CHANGE OF THE NEXT LEG OF THE COURSE

The race committee may adjust the position of marks without signaling a change in course,

provided no boat has started the leg to the mark that is being changed. This changes RRS 33.

## 11 THE FINISH

**11.1** The finishing line will be between a staff or halyard displaying a blue flag on signal vessel and the course side of the nearby finishing mark.

**11.2** The race committee may finish boats still racing and award their places based on their position at that time. Termination of a race will be signaled by the lowering of the finishing flag with hail or sound signal.

## 12 PENALTY SYSTEM

If a boat has her spinnaker drawing, RRS 44.1 is changed so that the Two-Turns Penalty is replaced by the One-Turn Penalty, except she must first drop the spinnaker completely, reset it and take the penalty, and have it drawing immediately after the penalty. This changes RRS 44.1 and 44.2.

## 13 TIME LIMITS

**13.1** The Mark 1, and Race Time Limits (see RRS 35), and Finishing Window are shown below:

Mark 1 Time Limit	Race Time Limit	Finishing Window
20 min.	50 min.	15 min.

**13.2** If no boat has passed the first mark within the Mark 1 Time Limit, the race will be abandoned.

**13.3** The Finishing Window is the time for boats to finish after the first boat sails the course and finishes. Boats failing to finish within the Finishing Window will be scored Time Limit Expired (TLE) without a hearing and shall be scored points one more than the last boat scored within the Finishing Window. This changes RRS 35, A5.1, A5.3 and A10

## 14 HEARING REQUESTS

**14.1** The protest time limit is 45 minutes after the race committee signal vessel docks.

**14.2** Hearing Request forms are available from the SSYC office.

## 15 SCORING

**15.1** The scoring system is as follows:  
RRS A5.3 applies, this replaces NoR 8.1

**15.2** One race is required to be completed to constitute a series.

**15.3** (a) When fewer than 4 races have been completed, a boat's series score is the total of her race scores.

(b) When from 4 to 7 races have been completed, a boat's series score is the total of her race scores, excluding her worst score.

(c) When from 8 to 11 races have been completed, a boat's series score is the total of her race scores, excluding her 2 worst scores.

(d) When 12 races have been completed, a boat's series score is the total of her race scores, excluding her three worst scores.

## 16 SAFETY REGULATIONS

**16.1** U.S. Coast Guard approved PFDs, with a secured whistle attached, shall be carried on the water for each person on board and shall be worn as conditions warrant.

**16.2** Check-in: Each boat shall, prior to her start, sail by the RC signal vessel when it is anchored, hail her sail number and the last name of the competitor, **and be acknowledged by the race committee.**

**16.3** A boat that retires from a race shall either notify the race committee at the first reasonable opportunity or notify the PRO ashore.

**16.4** The Race Committee may direct a boat to retire to shore for safety reasons. The boat will be scored Did Not Finish, and it will not be grounds for a request for redress. This changes RRS 62.1.

**16.5** When a race is abandoned by flag N over flag H or A, all boats shall return to the dock immediately.

**16.6** Each boat shall carry a paddle, bucket, throwable cushion with whistle, anchor with 100' of line and have an operational centerboard preventer line. A VHF Marine radio is also encouraged.

## 17 PRIZES

The South Shore Yacht Club Lightning Fleet Perpetual Fleet Champion Trophy will be awarded to the lowest scoring boat along with season series trophies at the SSYC winners' dinner.

Illustration A

Racing Area

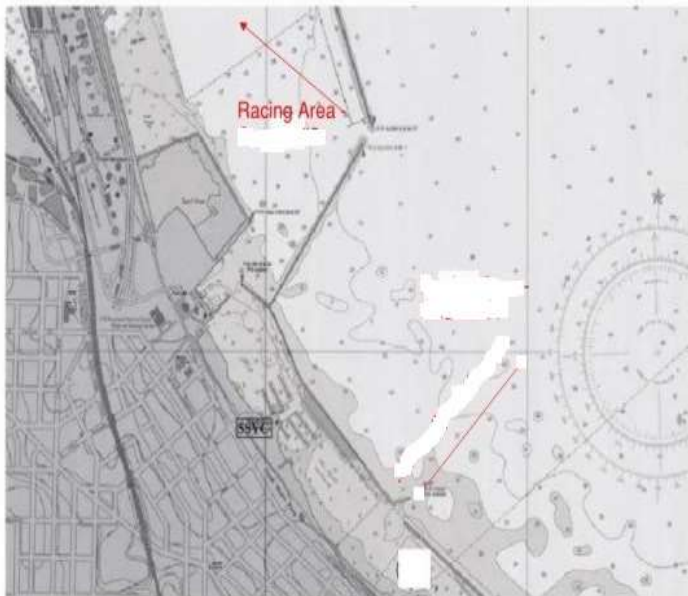
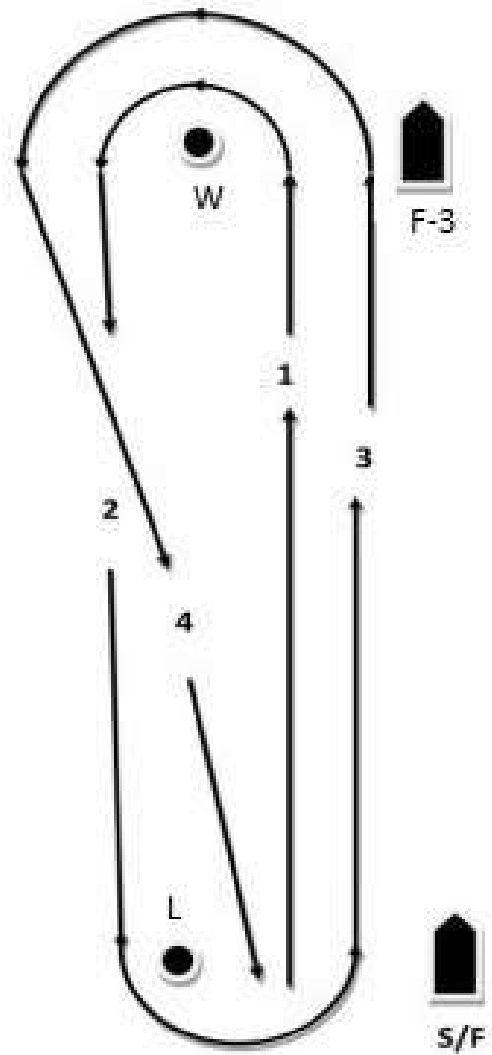


Illustration B

Course Diagram



Courses

- 2 Start - W - Finish
- 3 Start - W - L - Finish
- 4 Start - W - L - W - Finish